



TouchIT all-in-one setup instructions

The All in one installer is designed to turn a Windows machine into a functional Digital Signage player, by installing ImageFlyer and the TouchIT Web Admin Interface – along with a host of support software.

This guide looks to talk users through the post install process, along with providing them with additional information about the supplied software.

Please download the installer from the link provided by TouchIT and double click to run. Once it has completed the installation please follow the steps below.

Please do not restart the machine until the installer has completely finished installation

Please ensure you have your TouchIT license keys to hand when following the instructions.

Please note – this installer will setup Windows firewall rules for windows 7, if you are using a different version of Windows then please contact TouchIT for further assistance.

Post Install Setup

1) Complete SWEP post install setup

Double click on the new TouchIT Admin shortcut on your desktop to launch the TouchIT Web Admin interface on the local machine. Once open, depending on the version of the installer you may be presented with the following screen:

A screenshot of the TouchIT Web Admin interface setup screen. The screen has a light blue background and a dark grey footer. It contains four input fields for configuration: "Set Default Site Root" with the value "c:\imageflyer\", "Set Admin Username", "Set Admin Password", and "Repeat Admin Password". At the bottom, there are two buttons: "Submit" and "Logout".

Set Default Site Root :	<input type="text" value="c:\imageflyer"/>
Set Admin Username :	<input type="text"/>
Set Admin Password :	<input type="password"/>
Repeat Admin Password :	<input type="password"/>

Submit Logout

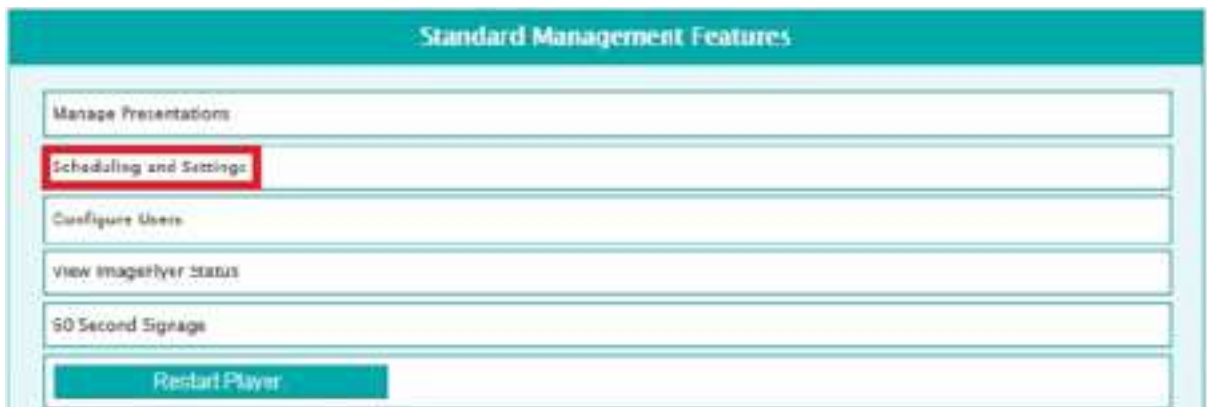


On this screen you need to change the Default Site Root to C:\Sedao and enter a user name and password to complete the TouchIT Admin setup. If it is not displayed and the login is shown (default user is admin and password is admin) this step has been completed by the installer

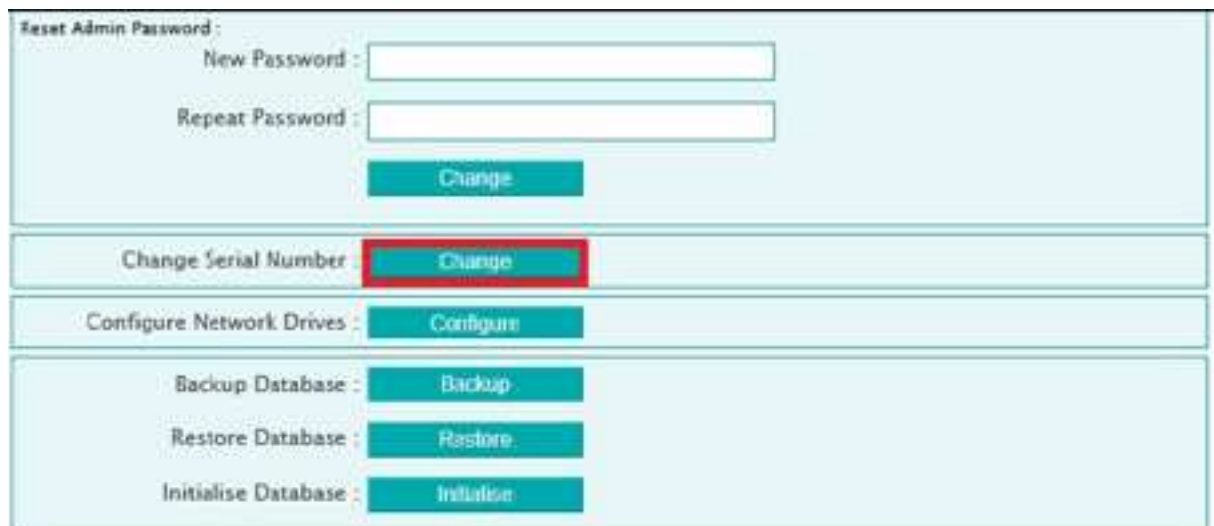
2) Upgrade SWEP Licence to full Licence

The current All in One installer comes with 12 month trial License for TouchIT Web Admin (SWEP). If you've purchased full License just follow the steps below to enter your full product License details:

From the main TouchIT Web Admin (SWEP) menu click on "Scheduling and Settings"



Scroll down until you see the "Change Serial Number" entry and click the "Change" button.





Enter new serial key.

A screenshot of a software interface for entering a serial key. It consists of a light blue header bar with the text "Enter Serial No.:" followed by six empty rectangular input boxes. Below this is a grey bar containing two teal buttons labeled "Authorise" and "Back".

3) Upgrade ImageFlyer License to full License

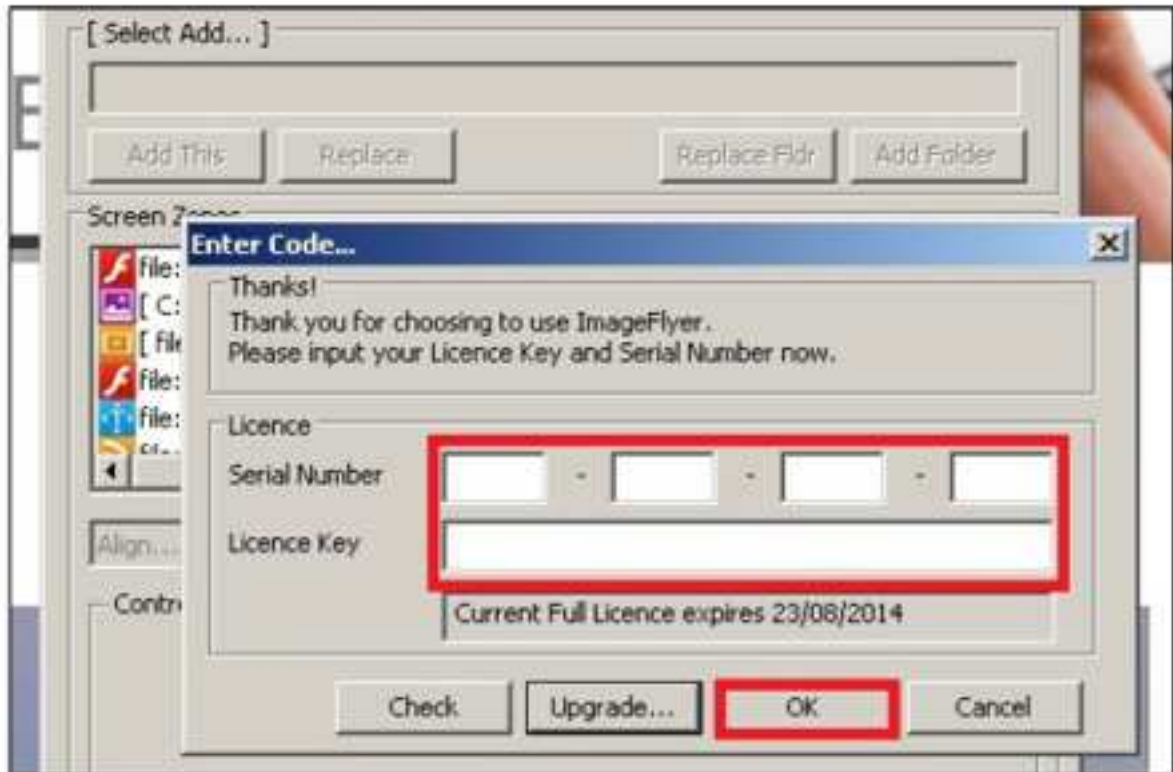
The All in One installer will install the main ImageFlyer software with a 30 day trial, which should be upgrade as soon as a License is purchased. You can do this by:



With ImageFlyer running click on the "Controls" entry on the main menu and select "License". If you can't see the control panel as show above, but a presentation appears to be playing, hit the "Page Up" key to bring it up.

Enter your License details in the correct boxes and hit ok to commit them. Serial

number and License key are case specific.





Additional Information

1) Remotely logging into TouchIT Web Admin (SWEP)

Once installed the new Digital Signage Player should be setup to accept incoming web connections on Port 80. If connected to a local network you can access the TouchIT Web Admin (SWEP) interface by typing http:// followed by either the IP address of the machine or the Domain Name.

2) VNC details

One of the additional pieces of software we install is TightVNC, a program that allows the user to remotely view and interact with the new Digital Signage Player. This piece of software has been password protected at setup with the following default password: admin

You'll need this password if you want to either change VNC settings or connect to the player using the remote viewing option in SWEP.