

TouchIT Board Manual

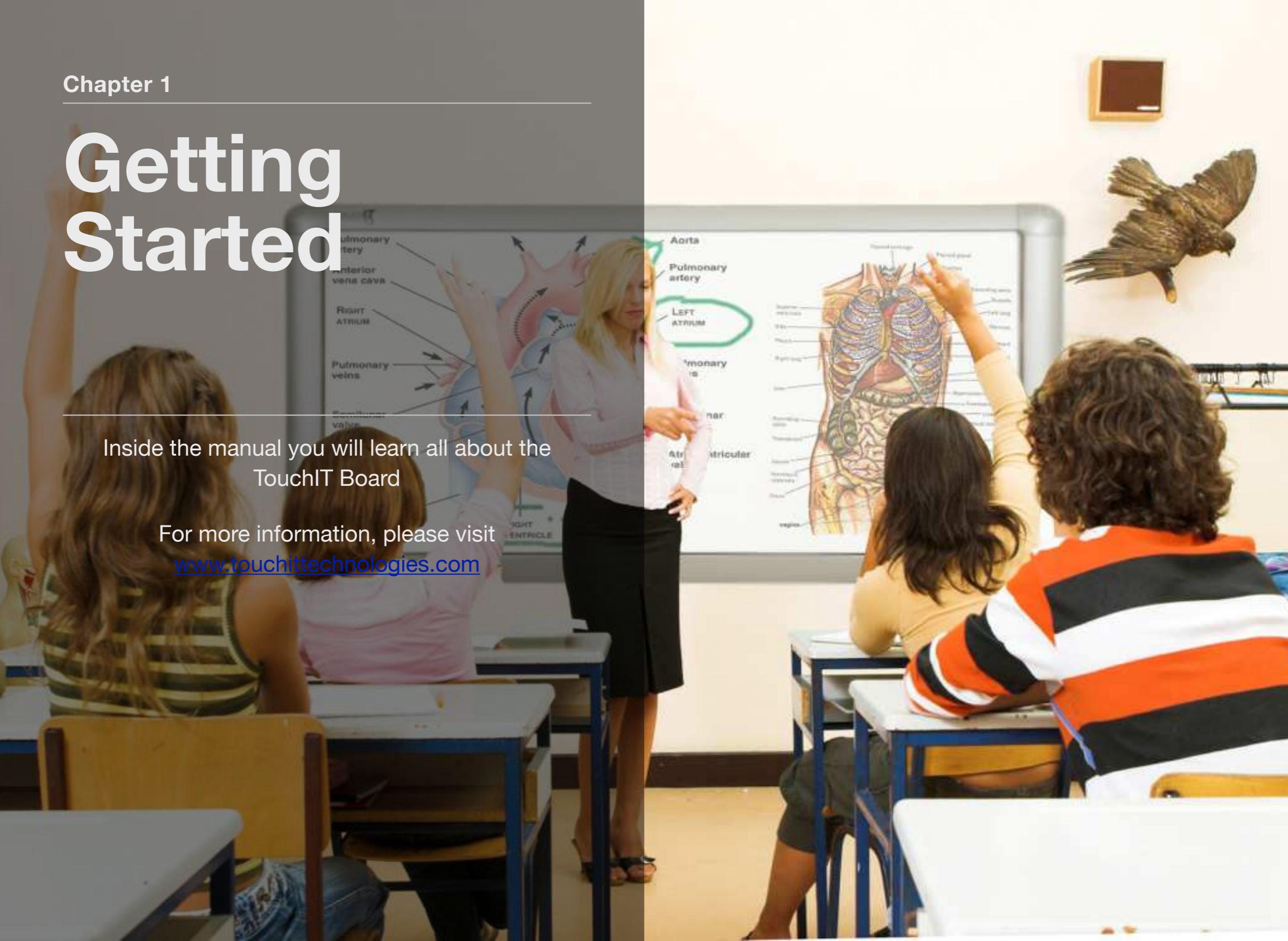


Chapter 1

Getting Started

Inside the manual you will learn all about the TouchIT Board

For more information, please visit www.touchittechnologies.com



Installation

IMPORTANT SAFETY INSTRUCTIONS

Please read these instructions carefully before using the product and keep them safe for future reference.

IMPORTANT SAFETY INSTRUCTIONS

1. Please read these instructions carefully before using the product and keep them safe for later reference.
2. Follow all warnings and instructions marked on the product.
3. Unplug this product from the USB Cable before cleaning. Clean the product with a damp soft cloth..
4. Caution of use varies from model to model; please observe appropriate operation as per model in use.
5. Do not place this product on an unstable cart, stand, or surface which may cause damage or harm to the product or individual.
6. This product should be operated from a 5V USB connection, please consult your dealer or local service company if you are unsure.
9. Do not allow anything to rest, or persons to walk on the USB Cable.
10. If an extension cable is used with this product, make sure it is an active repeater cable.
11. Do not attempt to service this product yourself, always refer to qualified or authorized person for the servicing of this product.



WARNING Failure to follow the installation instructions supplied with the product or that are contained in the guide could cause personal injury or result in damage to the product.



WARNING Do not climb on your TouchIT Board™ when on either the mobile stand or when the board has been installed on a wall. This could result in personal injury or damage to the product.



WARNING You must use the USB cable that came with your TouchIT Board™ In addition, the USB source computer must be compliant with CSA/UL/EN 60950 and bear the CE mark and CSA and/or UL Mark(s) for CAS/UL 60950. This is for operating safety and to avoid damage to the TouchIT Board™



WARNING If your TouchIT Board™ has to be repaired or requires replacement parts, please ensure that it is repaired by an authorized company and that all replacement parts are original and/or approved by TouchIT Technologies™



WARNING Do not allow children or adults to stare directly into the beam of the projector. This could result in damage to the

eyes. Please consult the projector manufacturer's guidelines of use for more information.



WARNING Only use a stand that is supplied by, and/or approved by TouchIT Technologies™ for use with the TouchIT Board™



WARNING Make sure the TouchIT Board™ is mounted at the correct height for use, do not climb on furniture in order to operate the TouchIT Board™



WARNING When wall mounting the TouchIT Board™ ensure that two people are present – two people are required for installation. Also ensure that the correct fixings are used for the wall type that you are mounting the board to.



WARNING

Ensure that proper cable management is employed in order to avoid a trip hazard from trailing cables.

Introduction

CHAPTER CONTENTS

2-1 About the Product

2-2 Use with a Data Projector

2-3 Use without a Data Projector



2-1 About the Product

TouchIT Board™ works in conjunction with your data projector and your computer to create a touch-based interactive whiteboard where you have full control of your PC from the Board. The TouchIT Board™ works just like a mouse allowing both left and right click functionality at the board. No longer do you have to be stuck behind your computer on a desk to teach a class, the TouchIT Board™ enables you to have full control at the board allowing you to really engage with your students. The TouchIT Board is available with Wizteach Educational Content.

2-2 Use with a Data Projector

By connecting your PC to a data projector and your TouchIT Board™ you can have full computer mouse functionality at the board. In essence, your TouchIT Board™ is a large Human Input Device (HiD) just like a computer mouse which allows both left and right click functionality.

The data projector creates the image on the TouchIT Board™ which after a simple calibration from the TouchIT Software, can be controlled with the simple touch of a finger.

You can run and control practically any application that you have on your computer – all from the board!

By means of the Wizteach Software, the mouse functionality is transformed into an interactive resource as the software allows you to annotate, create and edit images as well as a whole host of other features.



2-3 Use without a Data Projector

The TouchIT Board™ is a true dual-purpose piece of hardware. When used as above with a data projector, the TouchIT Board™ is a touch-based interactive whiteboard. However, when not used with a data projector, the porcelain-enameled surface is a world-class writing surface.

Simply use any dry-erase markers on the surface and with a dry cloth, the marker notes will be easily removed from the board. Unlike some other touch-based interactive whiteboard surfaces, an alcohol based cleaner is not required.



Wall Mounting the TouchIT Board

CONTENTS

3-1 Learn how to mount the TouchIT Board Correctly

The wall mounting of the TouchIT Board™ is a simple installation process. You will need; a spirit level, pencil, power drill, wall plugs and fixing screws (these are not included in the package) and the mounting brackets that came with your TouchIT Board.

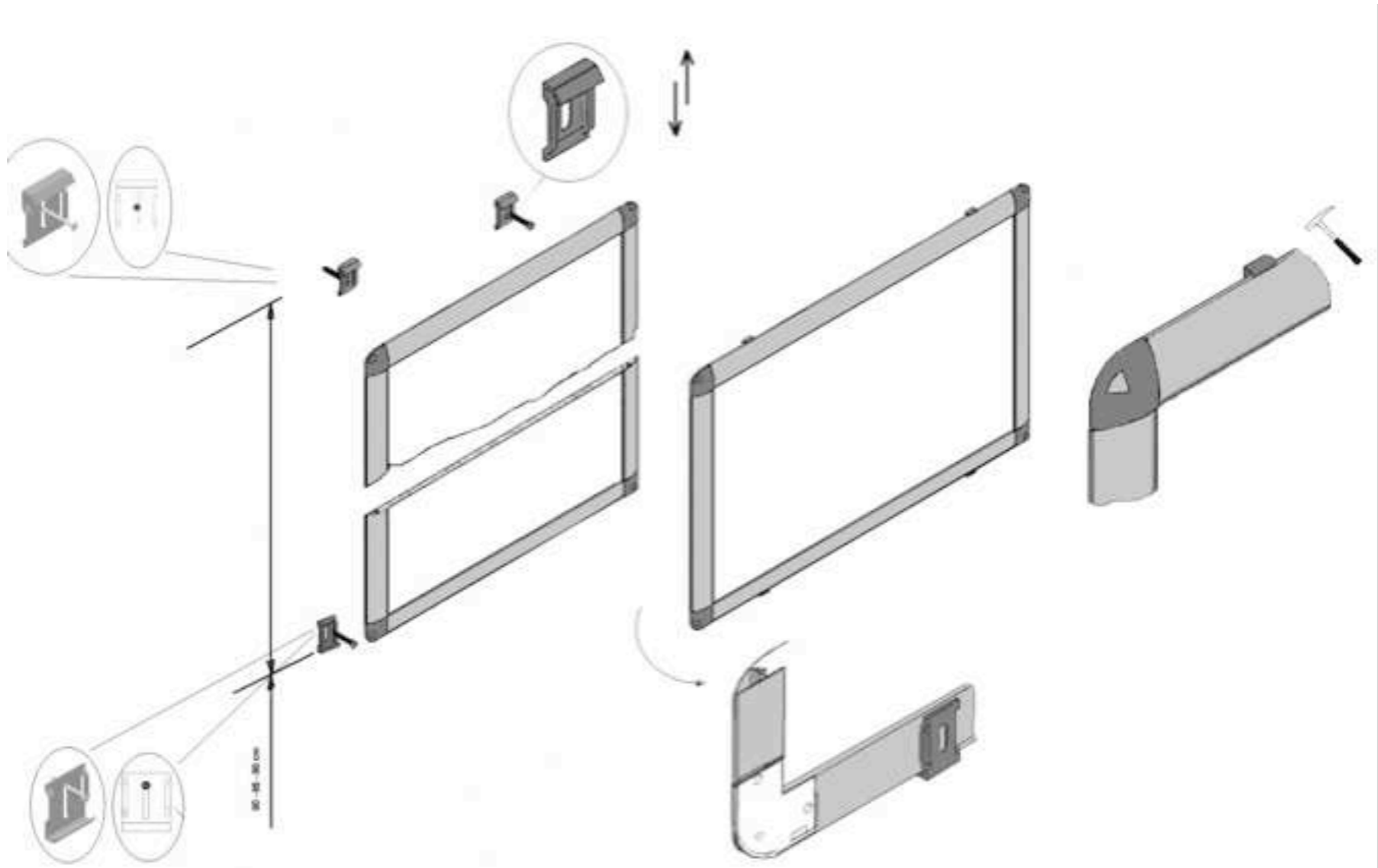
If you are mounting onto a stud wall, make sure that the brackets are firmly attached into the stud rather than the plasterboard. Please ensure you use the correct fixings for the type of wall you are mounting onto. If you are not sure, consult a professional installer.

Firstly, measure the height for the bottom of the board and mark. Drill the corresponding holes for the brackets and then fix in place. A spirit level may be required in order to get the brackets in the correct position and level.

Next, measure the width of the TouchIT Board and mark the height on the wall. Then, placing the top brackets in their uppermost position on the screw hole, firmly screw the bracket to the wall. Note, there should be a gap larger than the TouchIT Board's width otherwise the board cannot be fixed and clamped between the brackets. (see diagram on next page)

Next, left the TouchIT Board up to meet the brackets, ensuring that the bottom of the board is inserted into the bottom brackets first.

Holding the TouchIT Board in place, tap down on the top brackets to clamp the TouchIT Board firmly into position.



Cable Recommendations

CONTENTS

4-1 Extending the USB Cable

4-2 Hiding Cables

4-1 Extending USB

When extending a USB connection it is important to remember that a USB signal will degrade over distances greater than 5m (15') which may reduce the performance of the TouchIT Board™ and in some cases, cause the board not to work. Therefore, it is imperative that if the USB cable is extended, then a power repeater is used to boost the signal.



Good quality active repeater cables can be purchased from a number of manufacturers on the market.

The key is that the cable is active. It must mention “**Active Repeater**” on the body of the cable, or in the documentation that came with the cable otherwise the extension will not work.

The order of the extension cables is also important. It should be as follows;

PC to Active Repeater to Active Repeater to TouchIT Cable.

(NOTE; it is possible to have more than one active repeater cable if required)

YOU SHOULD ALWAYS have the TouchIT USB Cable as the last connection into the TouchIT Board.

4-2 Hiding Cables



Hiding cables is always a sign of a good installation by a qualified installer. However, it is good practice to be able to have access to the TouchIT Board's USB socket as any fault finding will require connecting a cable directly into the TouchIT Board rather

than using any for of extensions.

Best installation practice involves the use of trunking rather than embedding the cables into walls where future access maybe problematic.

Installing the TouchIT Board

CONTENTS

5-1 Installing the TouchIT Board

5-1-1. Installing the HID MT Software

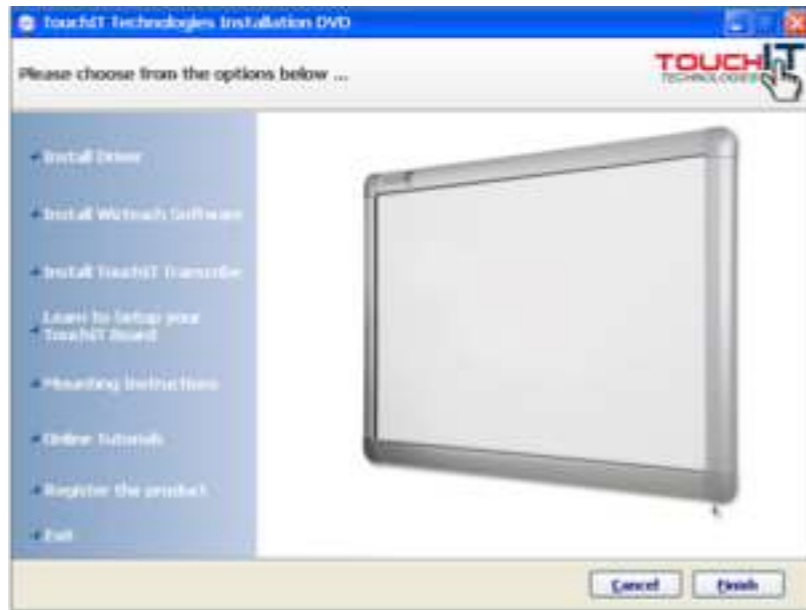
5-2 Installing Wizteach

5-1 Installing the TouchIT Board

The TouchIT Board is supplied with a Driver (HID Software) and Wizteach Content Software on the CD that came with the board.

- 1. Insert the CD that came with the TouchIT Board into your CD/DVD drive on your PC. The software should Autorun. If you see the window please go to step 3, otherwise follow step 2.**
2. If the CD does not Autorun, please browse the CD in 'My Computer' and double click on the AMPlayer.exe icon to launch the installer.

3. Plug in your TouchIT Board to an available USB slot.



4. Click 'Install Driver'

5. Follow the screen prompts through the installation





5-2 Installing Wizteach



From the CD Menu, choose Install Wizteach and follow through the prompts.

When both the HID Server and the Wizteach Software are installed, you will see the following Icons on your desktop.



Calibration

CONTENTS

6-1 Learn how to calibrate your TouchIT Board.

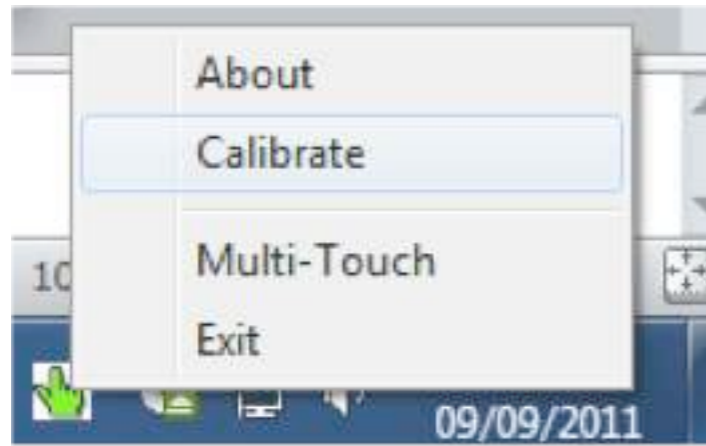
6-1 The Green Hand

In order for your TouchIT Board to be operational and be calibrated, you must have the server application running – this is the Green Hand that can be found in your system tray (by the clock)

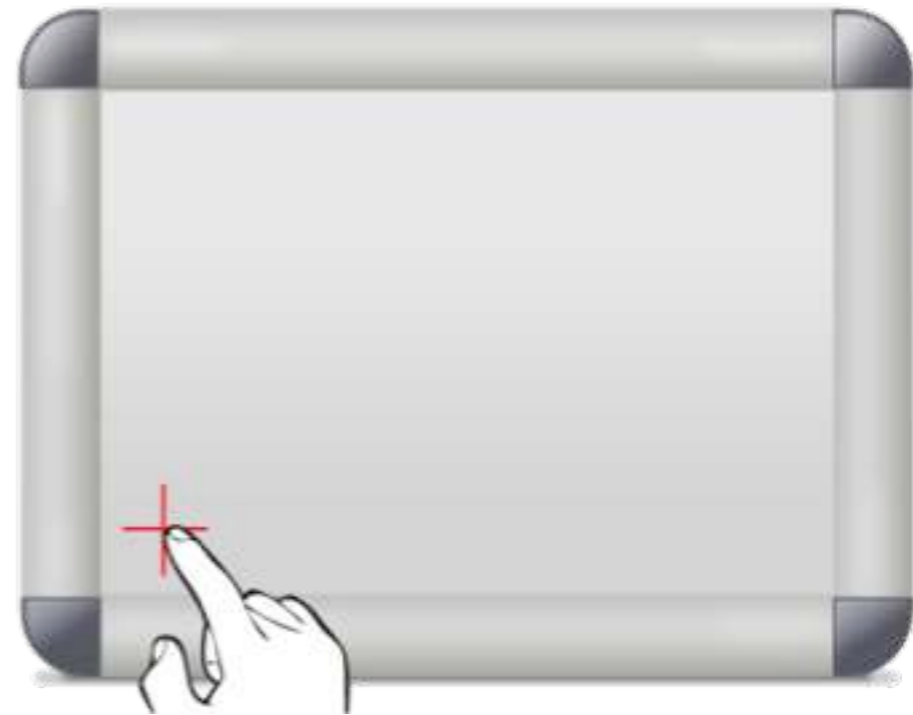
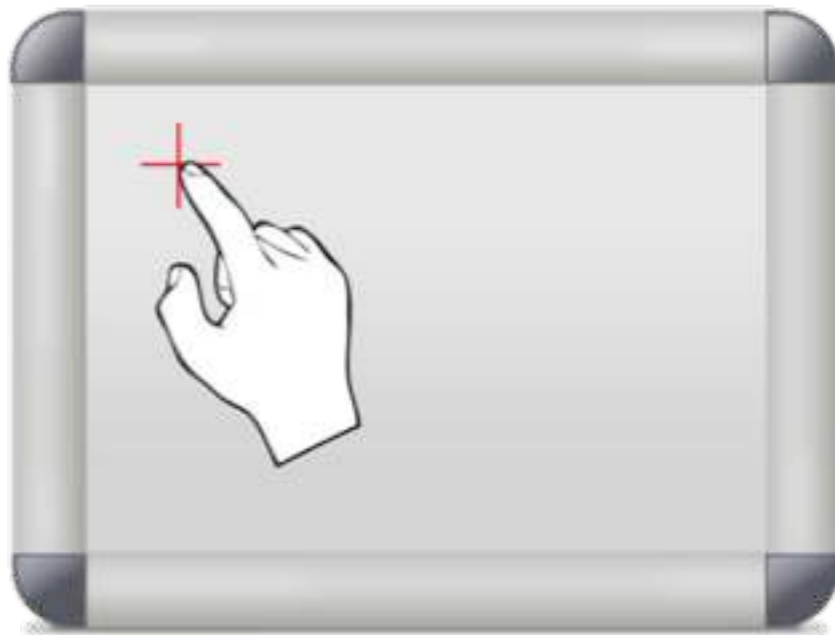
When it is not connected to the board, (or in multi-touch mode in Win7, more about this later) it will be red.

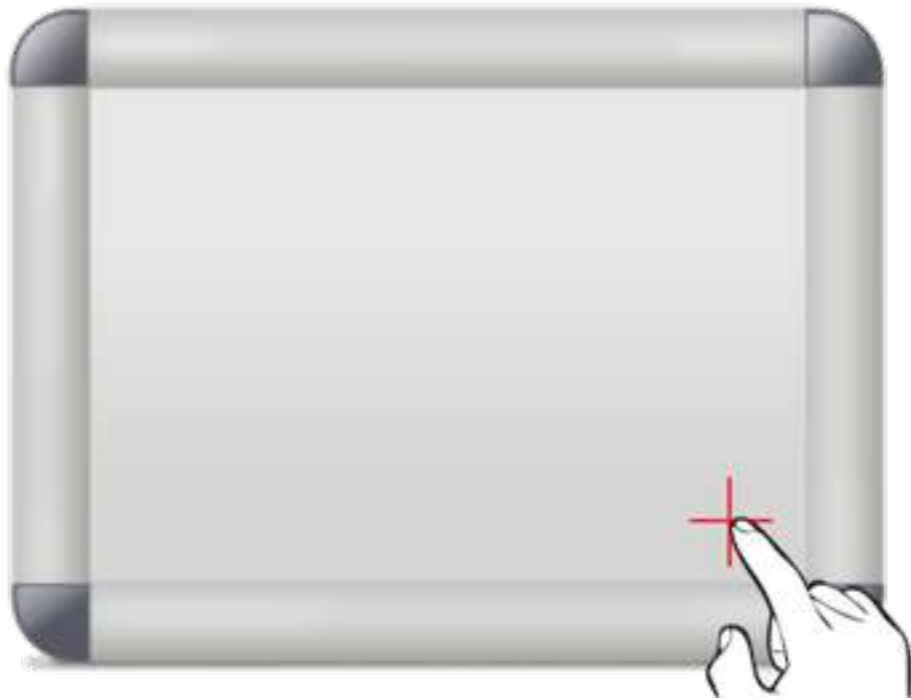


Right Click on the server Icon in the System Tray and choose “Calibrate”



Follow each of the cross hairs in turn (either 4 or 9 points) touching the center of each until the board tells you to release or raise your finger.

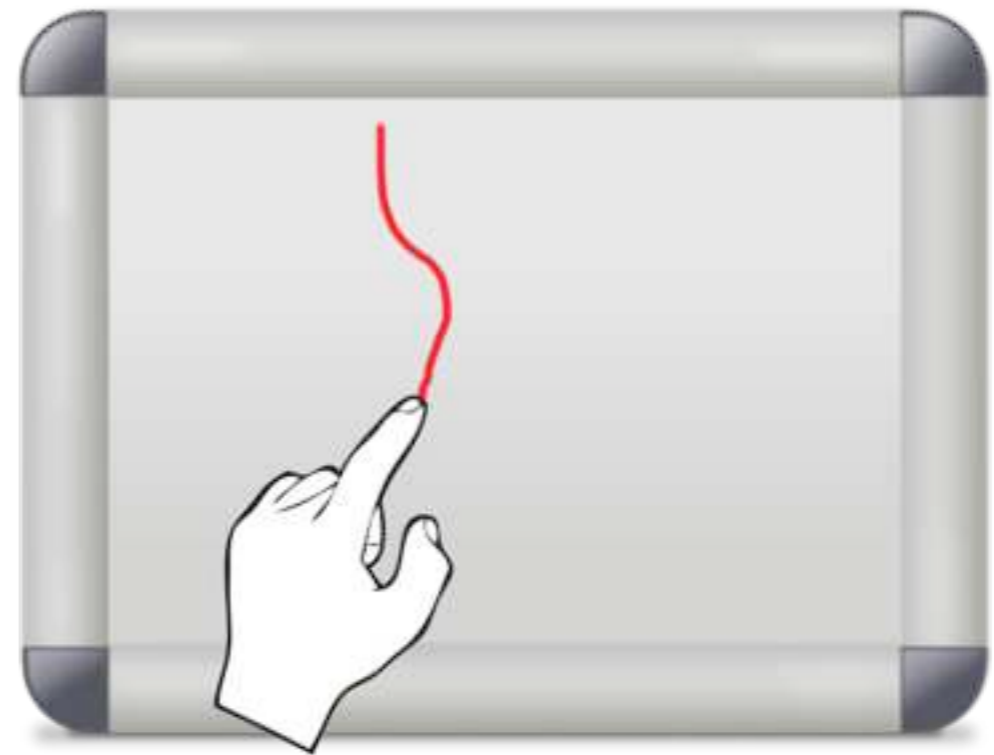




Simply touch the board to register a left click

Press and hold (2 seconds) for a right click

You have your mouse at your **finger tips!**



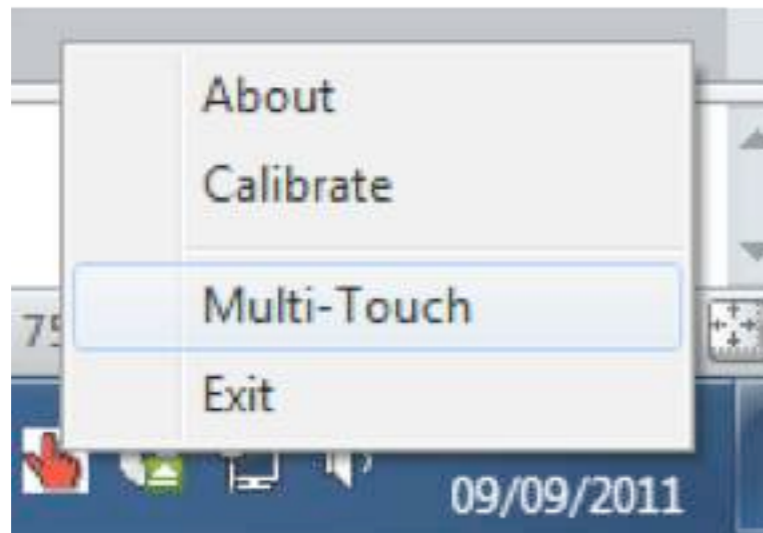
Multi Touch

Your TouchIT Boards are multi-touch capable under Windows7

After Calibration, 'Right Click' on the server and select Multi-Touch

(The server will turn red) and you can now use dual input under Win7.

To make best use of this, download the Microsoft Touch Pack – it is a free download.



Care and Maintenance

CARE AND MAINTENANCE

Cleaning the TouchIT Board

Disclaimer

Trouble Free Performance

Cleaning the Surface

Registering your Product

More Information

Cleaning the TouchIT Board

1. Use a dry cloth to remove dry erase ink
2. For tough stains, use a damp cloth (water)
3. Keep clean and dust free for best results

Disclaimer

The manufacturer assumes no responsibility, and will not be liable of any damage resulting from non-conforming safety actions, operation, or cleaning of this product.

Trouble Free Performance

In order to keep your product in the best possible condition, please make sure that the infra-red transmitters and receiver (covered with the red IR plastic) do not become coated with dust. Clean with a dry cloth.

Keep your software up-to-date. The latest versions can be downloaded from www.touchittechnologies.com

Cleaning the Surface

Cleaning the porcelain enameled surface should be done with a dry cloth, even when removing dry-erase marker notes. If low quality markers are used on the surface, and there is a residue left behind (some red markers can be particularly bad for this) the best option is to use a damp cloth (damp from water) There should be no reason to use an alcohol based cleaner for the TouchIT Board™

Registering your Product

Please register your product at www.touchittechnologies.com/register This will ensure you receive notification of the latest updates and developments from TouchIT Technologies as well as extending your two year warranty for a third year absolutely free.

More Information

For more information please visit www.touchittechnologies.com